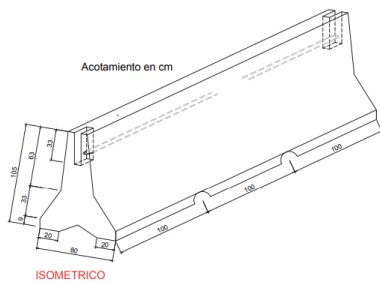


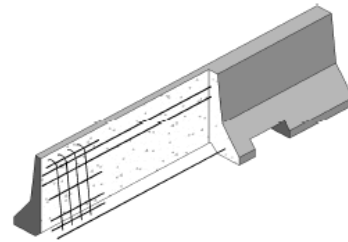
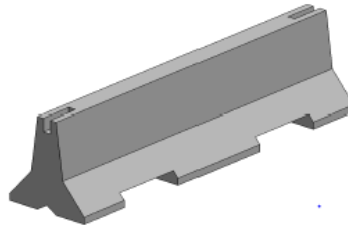
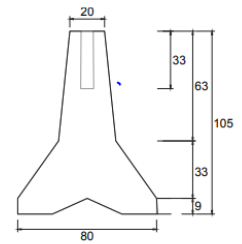
FICHA TÉCNICA BARRERA CENTRAL NEW JERSEY MODIFICADA

ESPECIFICACIONES	
NORMAS QUE CUMPLE	N-CTR-CAR-1-07-010/00, NMX-C-524-ONNCC-2016, ASTM STANDARS SPECIFICATION FOR PRECAST CONCRETE BARRIER A82, A185, A416, A421, A496, A497, A615M, A616, A617, C61, C33, C39, C42, C150, C173, C231, C260, C309, C330, C494, C595, C618
RESISTENCIA DEL CONCRETO	$f'c = 150/200/250/300/350 \text{ kg/cm}^2$
RESISTENCIA DEL ACERO	$f'y = 4\ 200 \text{ kg/cm}^2$.

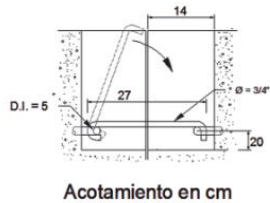
ALTURA CM	LARGO CM	ANCHO BASE CM	ANCHO PUNTA CM	PESO KG
105	300	80	20	2800



CORTE TRANSVERSAL



DETALLE DE UNIÓN



VISTA SUPERIOR

